



Arch.: Delugan Meissl, Vienna

 **EQUITONE**

Fibre cement facade materials

FAREBNÁ ŠKÁLA

[www.equitone.sk](http://www.equitone.sk)  
[www.equitone.cz](http://www.equitone.cz)

Produced by  Eternit



# EQUITONE [natura]

**Materiál:**

Vláknocement [EN 12467]

**Povrch:**

Matný, hladký s jemne, ale jasne viditeľnou štruktúrou vlákien

**Formát:**

max.využitelný rozmer 3100 x 1250 mm

**Hrúbka:**

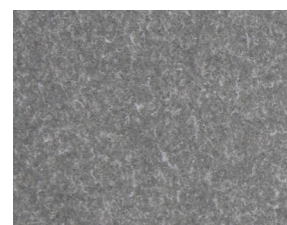
8 a 12 mm

**Trieda reakcie na oheň:**

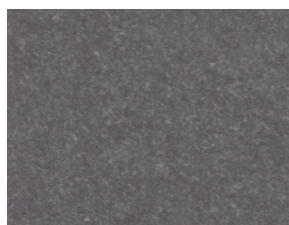
nehorľavý A2-s1, d0 [EN 13501-1]

**Použitie:**

Odvetrávané fasády s možnosťou montáže na hliníkovú alebo drevenú podkonštrukciu, dizajn interiéru a nábytku



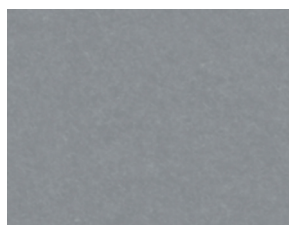
Sivá N 252 / NU 252\*



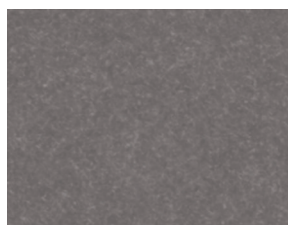
Sivá N 271



Sivá N 272



Sivá N 273



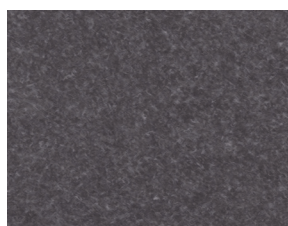
Sivá N 281



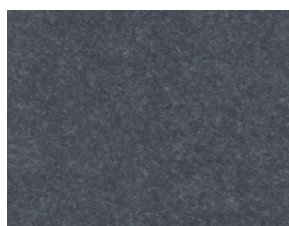
Sivá N 282 / NU 282\*



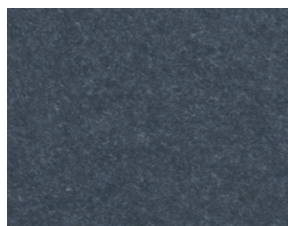
Sivá N 283



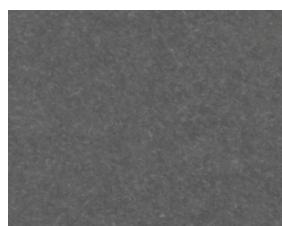
Modrá N 471



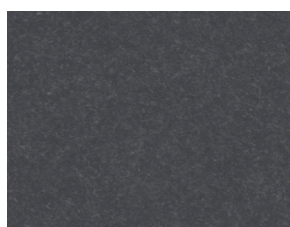
Modrá N 472



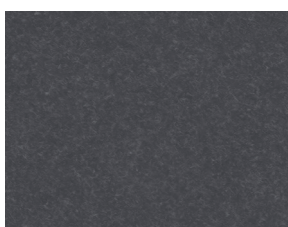
Modrá N 473 / NU 473\*



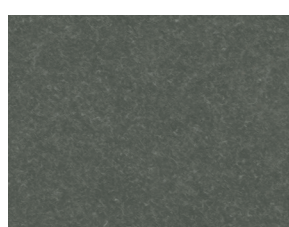
Zelená N 581



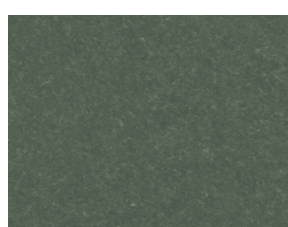
Zelená N 582



Zelená N 583



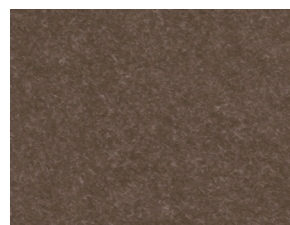
Zelená N 571



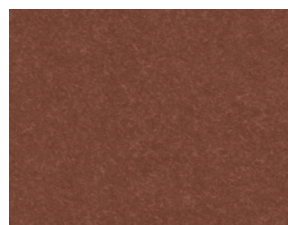
Zelená N 572 / NU 572\*



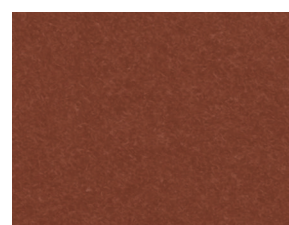
Zelená N 573



Červená N 371



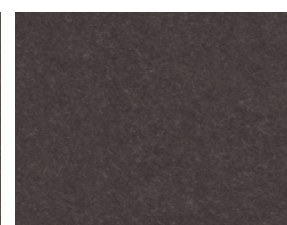
Červená N 372



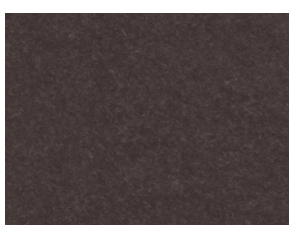
Červená N 373 / NU 373\*



Čierna N 071



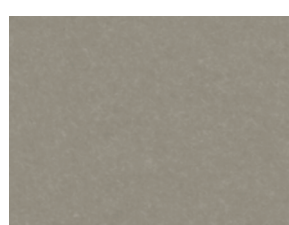
Čierna N 072



Čierna N 073 / NU 073\*



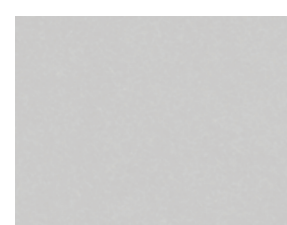
Prírodná sivá N 250 / NU 250\*



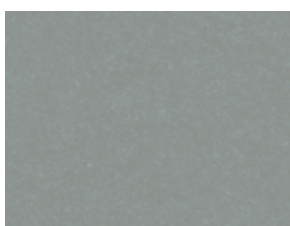
Sivá N 291



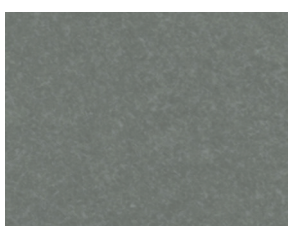
Sivá N 292 / NU 292\*



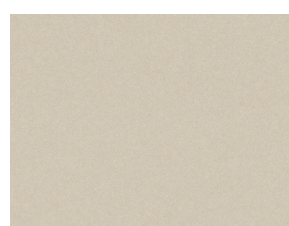
Biela N 191 / NU 191\*



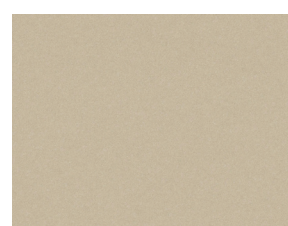
Zelená N 591



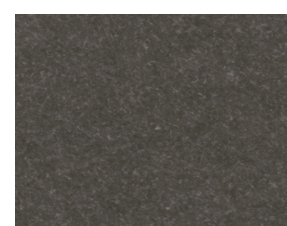
Zelená N 592



Běžová N 861 / NU 861\*



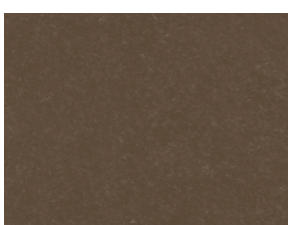
Hnedá N 961 / NU 961\*



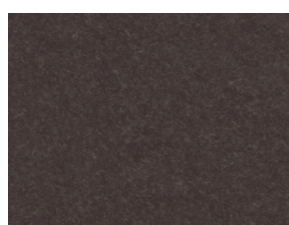
Hnedá N 971



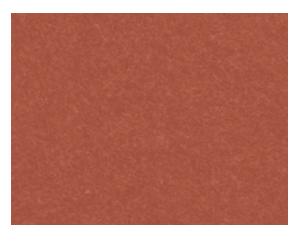
Hnedá N 972



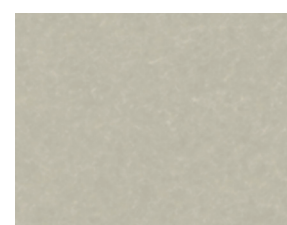
Hnedá N 973 / NU 973\*



Antracitová N 251 / NU 251\*



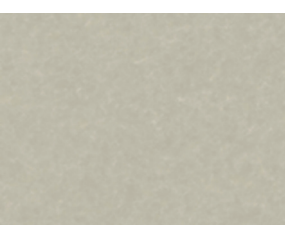
Rubínová N 359 / NU 359\*



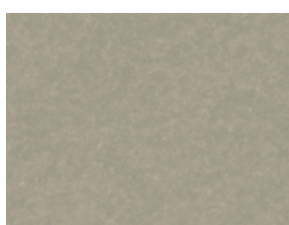
Krémovobiela N 154 / NU 154\*



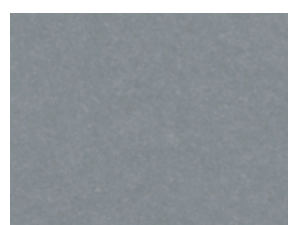
Sivá N 293



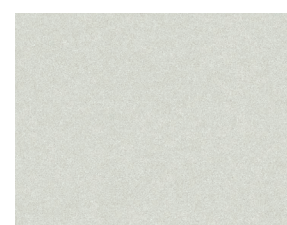
Běžová N 891 / NU 891\*



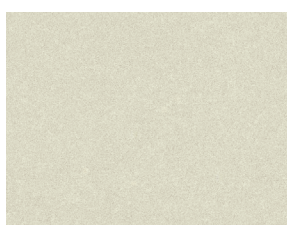
Běžová N 892



Modrá N 491



Biela N 161 / NU 161\*



Biela N 162 / NU 162\*

\* Priehľadná prefabrikovaná ochranná vrstva PRO - antigrafiti povrchová úprava. Odolná voči mechanickému poškodeniu. Hladký a ľahko udržiavateľný povrch.





# EQUITONE [tectiva]

**Materiál:**

Vláknocement [EN 12467]

**Povrch:**

Originálny do zmesi prefarbený materiál s jemne brúseným povrchom v pozdĺžnom smere dosky

**Formát:**

max. využiteľný rozmer 3050 x 1220 mm

**Hrúbka:**

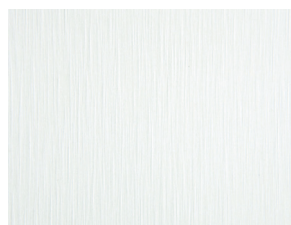
8 mm

**Trieda reakcie na oheň:**

nehorľavý A2-s1, d0 [EN 13501-1]

**Použitie:**

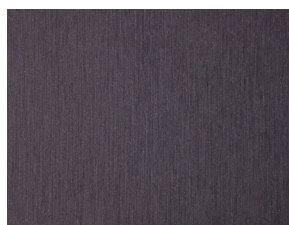
Odvetrávané fasády s možnosťou montáže na hliníkovú alebo drevenú podkonštrukciu, dizajn interiéru a nábytku



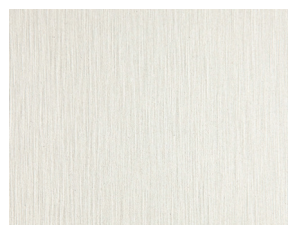
Biela TE 90



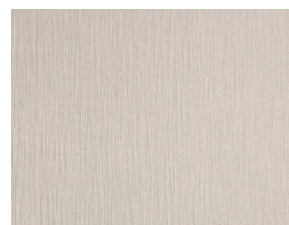
Tmavosivá TE 20



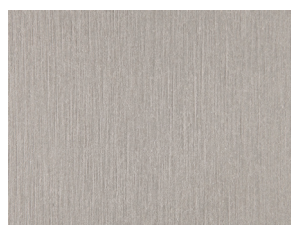
Grafitová TE 80



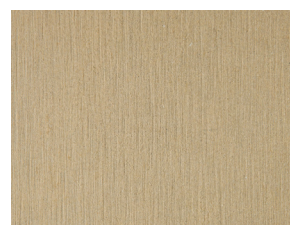
Krémovobiela TE 00



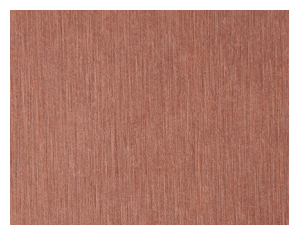
Svetlobéžová TE 10



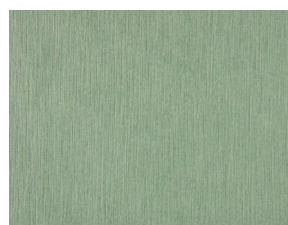
Bledohnedá TE 60



Okrovožitá TE 30



Terakotová TE 40



Nefritová TE 50

# EQUITONE [pictura]

## Materiál:

Vláknocement [EN 12467]

## Povrch:

Hladký a matný povrch dosahujúci atraktívny architektonický vzhľad.  
Prefabrikovaná ochranná vrstva PRO - antigraffiti povrchová úprava

## Formát:

max. využiteľný rozmer 3100 x 1250 mm

## Hrúbka:

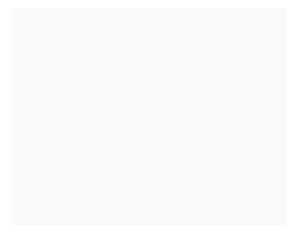
8 a 12 mm

## Trieda reakcie na oheň:

nehorľavý A2-s1, d0 [EN 13501-1]

## Použitie:

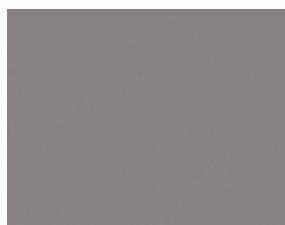
Odvetrávané fasády  
s možnosťou montáže  
na hliníkovú alebo drevenú  
podkonštrukciu, dizajn  
interiéru a nábytku



Biela PU 141\*\*



Sivá PU 243



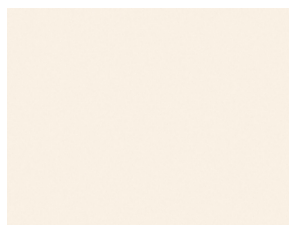
Sivá PU 242



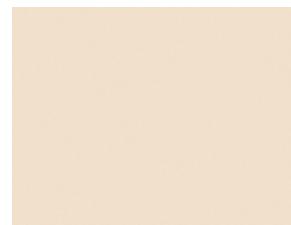
Sivá PU 241



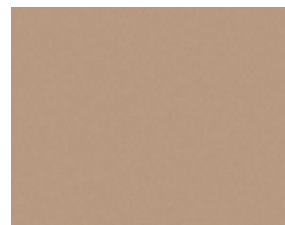
Čierna PU 041\*



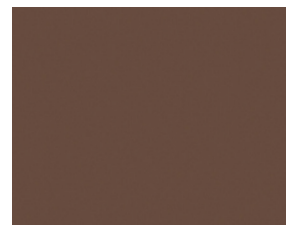
Běžová PU 841



Běžová PU 842



Hnedá PU 943



Hnedá PU 941



Zelená PU 543



Zelená PU 542



Zelená PU 541



Oranžová PU 741



Červená PU 341



Modrá PU 441

\* Povrchová úprava na antracitovej vláknocementovej doske. Všetky ostatné farebné odtiene na prírodnej sivej vláknocementovej doske.

\*\* Povrchová úprava na sivej vláknocementovej doske. Možnosť vyhotovenia na bielej vláknocementovej doske.



# EQUITONE [textura]

## Materiál:

Vláknocement [EN 12467]

## Povrch:

Štrukturovaný, pripomínajúci pomarančovú kôru, s vysokou odolnosťou proti poškrabaniu

## Formát:

max. využiteľný rozmer 3100 x 1500 mm

## Hrúbka:

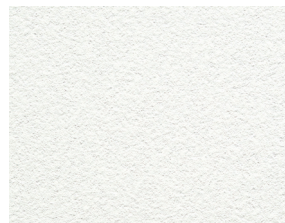
8, 10 a 12 mm

## Trieda reakcie na oheň:

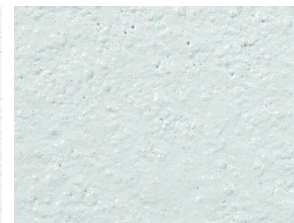
nehorľavý A2-s1, d0 [EN 13501-1]

## Použitie:

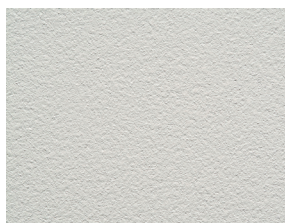
Odvetrávané fasády  
s možnosťou montáže  
na hliníkovú alebo drevenú  
podkonštrukciu, balkónové  
výplne, dizajn interiéru  
a nábytku



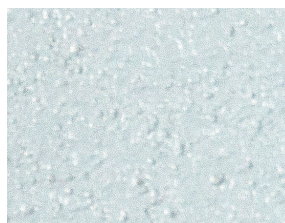
Biela TG 102



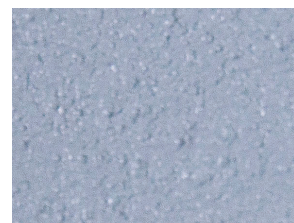
Zelená TG 504



Sivá TG 205



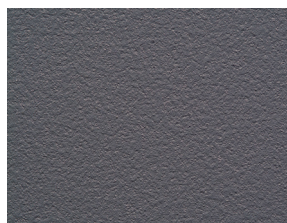
Modrá TG 403



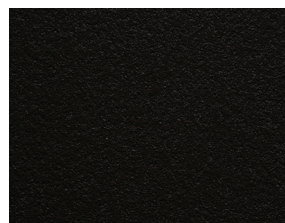
Modrá TG 404



Sivá TG 206



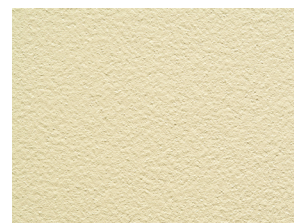
Sivá TA 207



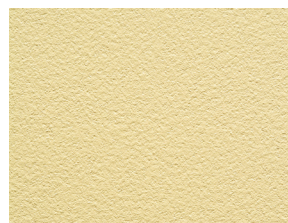
Čierna TA 001



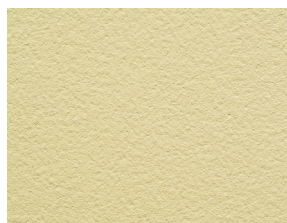
Modrá TA 405



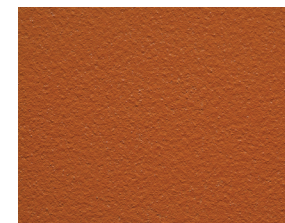
Žltá TG 601



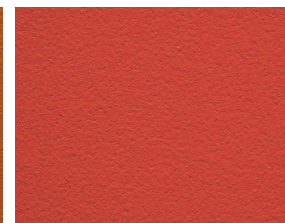
Žltá TG 602



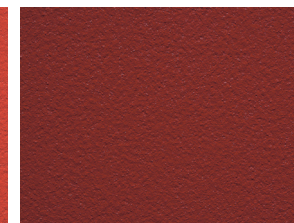
Běžová TG 803



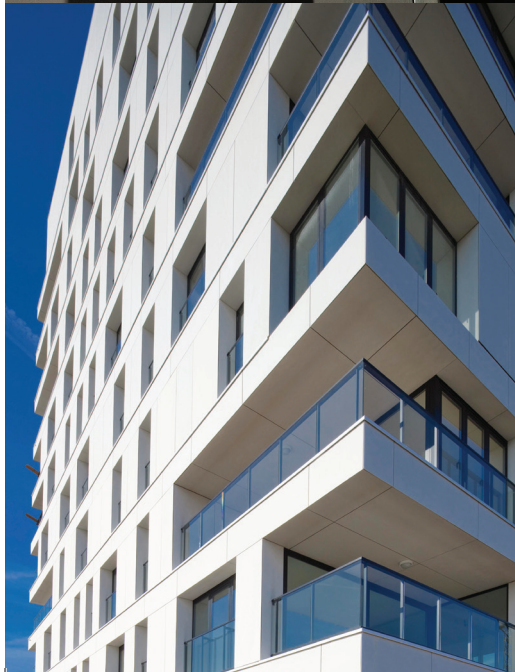
Oranžová TA 701



Červená TA 305



Červená TA 304





 **EQUITONE**  
Fibre cement facade materials

[www.equitone.sk](http://www.equitone.sk)

[www.equitone.cz](http://www.equitone.cz)



EBM Co., s.r.o.  
Štúrova 155, 949 01 Nitra  
Slovensko

Kontakty - divízia Fasády:  
Projektový manažér pre SR +421 917 507 807  
Projektový manažér pre ČR +420 725 946 340

[www.ebmco.sk](http://www.ebmco.sk)  
[www.ebmco.cz](http://www.ebmco.cz)